

# Float switch TS-MPS

Reed-contact equipped

Ready assembled or construction kit (without float pipe) - only in combination with level control TS-NIA



Float switch TS-MPS

## Application

Reed-module equipped float switches are perfectly appropriate for monitoring and controlling of in-tank liquid levels.

They are used as display for messages like empty status signal / full status signal, for controlling of pumps or valves as well as for alarm status signals.

The variety of applications demands individual configuration. Following this need, the float switch TS-MPS is optional available as a construction kit for self-installation.

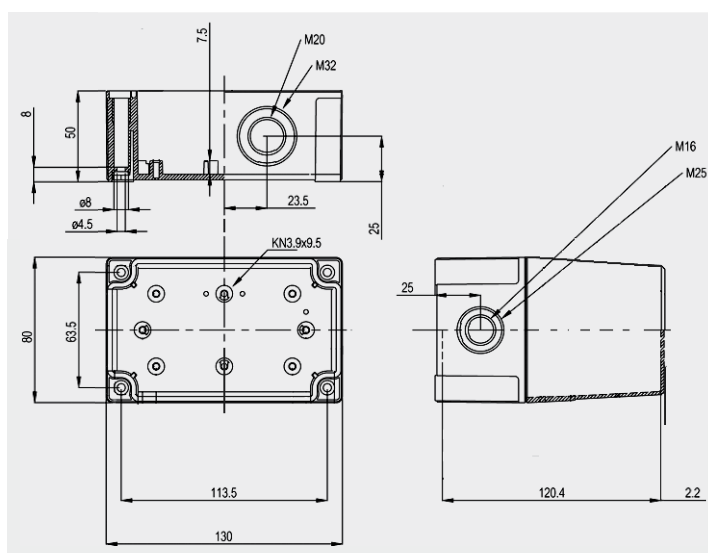
## Description

- Liquid level probe/sensor, reed-contact equipped
- Float pipe available in a choice of materials, PVC, PP, PVDF or stainless steel
- Up to 5 reed-modules per application
- Float lever, permanent magnet equipped
- Male screw-in thread 1 1/2" and 2"
- Spacious connection chamber
- Protection class IP 65

*TIVAL* Sensors magnetic float switches are equipped with special designed reed-modules mounted inside the float pipe. The cable length between the individual reed-modules defines the pitch between the desired liquid levels. Reed-module actuation is provided by a permanent magnet, which is part of the float lever. The lever moves along the float pipe and is the system's only mobile part.

The *TIVAL* Sensors Level Control TS-NIA is required for liquid level interpretation

## Dimensional drawing



## Components

Connector head: including cable clamps, float lever and sealing plug.

Reed-module: MPS 05

Float lever (cylindric): material PP  $\varnothing$  38 x 60 mm  
material PVDF  $\varnothing$  55 x 70 mm  
material stainless steel  $\varnothing$  52 x 52 mm

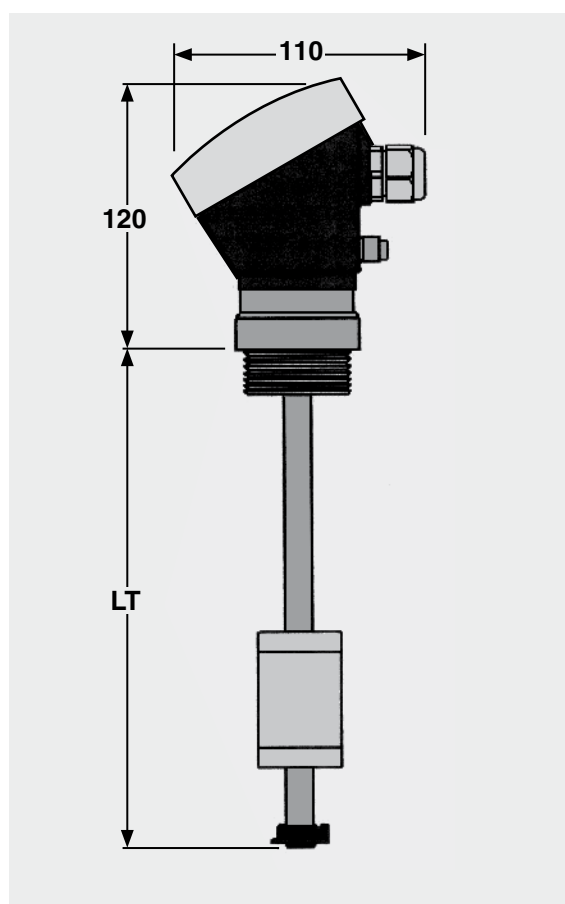
# Float switch TS-MPS

Reed-contact equipped

Ready assembled or construction kit (without float pipe) - only in combination with TS-NIA

Technical data	Type: TST-MPS			
Material float pipe	PVC	PP	PVDF	Stainless steel
Material connector head	PBT	PBT	PBT	PBT
Medium temperature, max	+60° C	+60° C	+60° C	+60° C
Medium density, max (g / cm <sup>3</sup> )	0,5	0,5	0,9	0,7
Tank pressure, max ( bar)	2	2	3	30
Protection class	IP 65	IP 65	IP 65	IP 65
Float pipe diameter (mm)	ø16 x 1,2	ø16 x 1,8	ø20 x 1,8	ø15 x 1
Float pipe length (mm)	min. 100 max. 2500	min. 100 max. 2500	min. 100 max. 2500	min. 100 max. 2500
Process connection*	1 1/2"	1 1/2"	1 1/2"	2"
Cable, connection between reed-modules	1 mm <sup>2</sup> (rigid)	1 mm <sup>2</sup> (rigid)	1 mm <sup>2</sup> (rigid)	1 mm <sup>2</sup> (rigid)

\* Process connection in different sizes, materials and flange connection upon request.



Level control TS-NIA

## Construction kit

For flexible and individual adaption to variable tank dimensions and liquid levels the float switch TS-MPS is optional available as a construction kit for self-installation. This version is supplied without a float pipe.

Please refer to the following chart for combining the components for your individual application.

## Construction kit

Type	Part No.
Connector head NR 1 1/2" (PVC)	1090105
Reed-module MPS 05	1090106
Level control TS-NIA (230 V)	1090100